

The **BIG** **HAWAI'I** R E P R O D U C I B L E **Activity Book!**

BY CAROLE MARSH

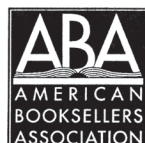
This activity book has material which correlates with the Hawai'i Content and Performance Standards.

At every opportunity, we have tried to relate information to the History and Social Science, English, Science, Math, Civics, Economics, and Computer Technology Hawai'i directives.

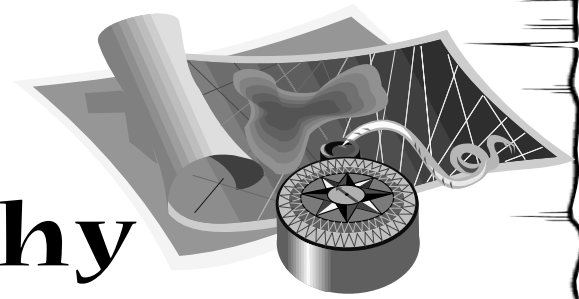
For additional information, go to our websites: www.hawaiiexperienceforkids.com or www.gallopade.com.



Gallopade is proud to be a member or supporter of these educational organizations and associations:



Hawai'i Topography is "Tops"!



When we learn about Hawai'i's topography, we use special words to describe it. These words describe the things that make each part of the state interesting.

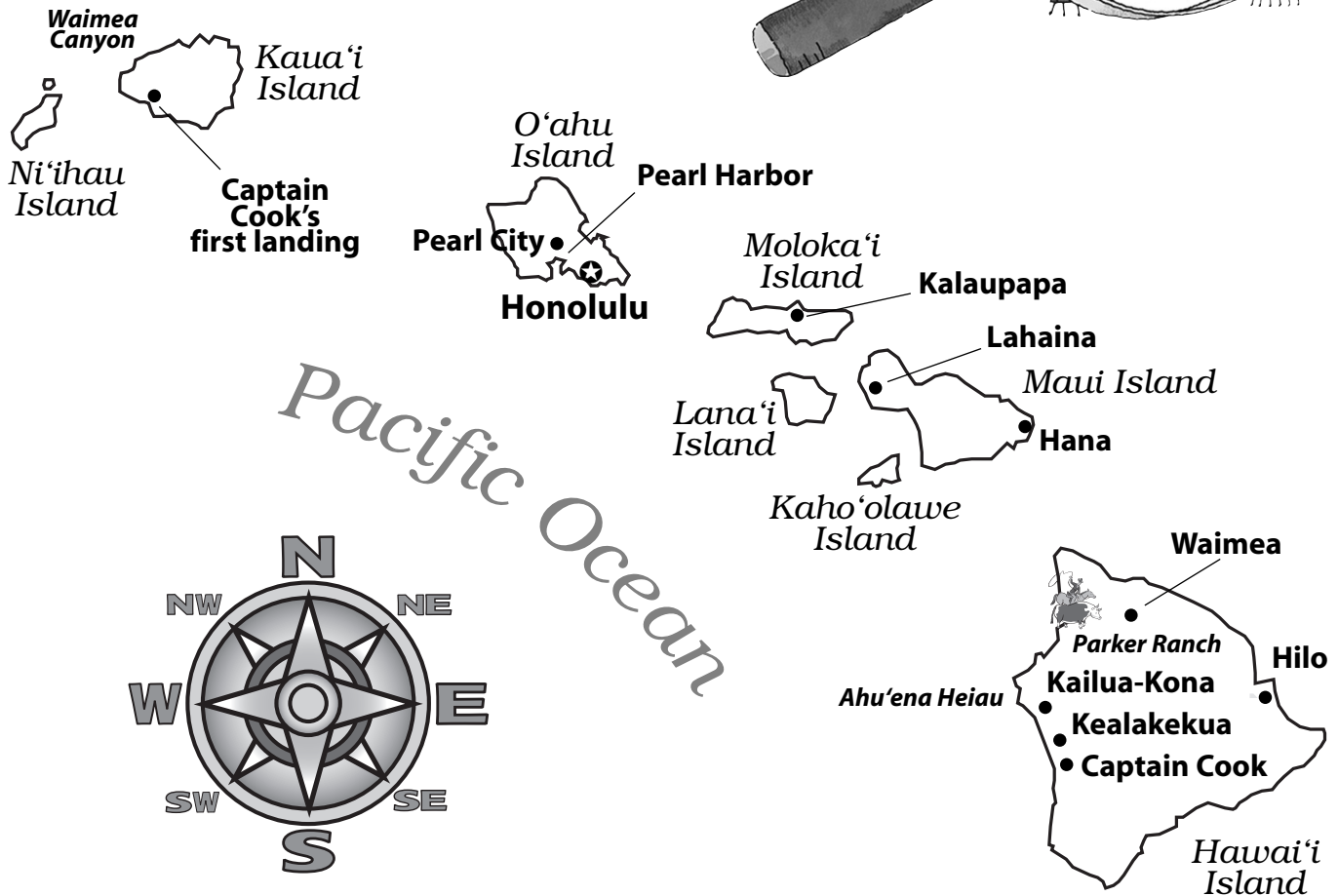
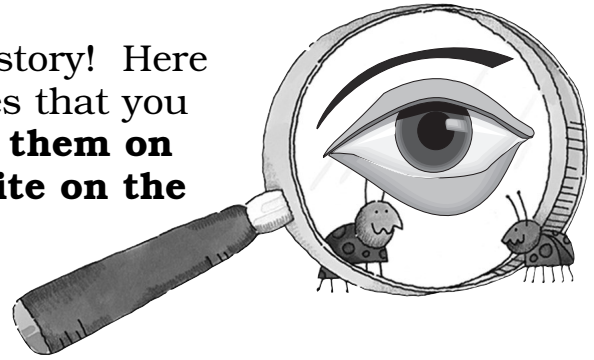
Cross out every other letter below beginning with the first one to find out what each topographical term is!


1. **W A E R N C K H F I Q P X E Y L V A Z G J O**
a group or chain of many islands
2. **K S E H J O S A B L**
sandbank, sand bar, or ledge of rock or coral that makes the water shallow
3. **X A M T R O K L W L**
a ring-shaped coral island or group of islands enclosing a lagoon
4. **I V D O N L B C E A S N Z O**
an opening in the earth's crust, often at the top of a mountain, from which lava escapes
5. **F I H N G L P E R T**
a narrow strip of water running from a larger body of water between islands
6. **E L B A V G J O D O K N**
a pond or small lake connected with a larger body of water
7. **N R I E S E K F**
a narrow ridge of rocks, sand, or coral at or near the surface of the water
8. **R M B O G U S N K T E A J I L N**
a very high peak or hill


ANSWERS: 1-archipelago; 2-shoal; 3-atoll; 4-volcano; 5-inlet; 6-lagoon; 7-reef; 8-mountain


History Mystery Tour!

Hawai'i is bursting at the seams with history! Here are just a few of the many historical sites that you might visit. **Try your hand at locating them on the map! Draw the symbol for each site on the Hawai'i map below.**




 **USS Arizona National Memorial:** at Pearl Harbor; memorial to the 1,177 men killed on the *Arizona* in the Japanese attack on December 7, 1941

 **Lahaina Fort:** built at the order of Queen Keopuolani in 1831 to warn unruly whalers and sailors on ships docked in Lahaina Harbor

 **Ahu'ena Heiau:** near Kailua-Kona; the temple where Kamehameha I conducted government meetings

 **Captain Cook Monument:** at Kealakekua Bay; erected in 1874 to honor Captain James Cook

 **Kauiki Hill:** near Hana; the site of an ancient fortress against the invasion of Maui by other Hawai'ians

The Root of Hawai'ian Royalty!



In 1790, a warrior from the Big Island named Kamehameha began to conquer the other islands, starting with Maui and Lana'i. Kamehameha waged several wars, and by 1795, he had won control of all of the main islands except Kaua'i and Ni'ihau. In 1810, the last two were ceded (given) to him, and all eight were part of Kamehameha's kingdom. He then became King Kamehameha I (the Great).

King Kamehameha ended the traditional warfare between islands and adopted uniform laws throughout his kingdom. Kamehameha made his kingdom rich by trading with Europe and the United States. Kamehameha was also determined to keep Hawai'i independent and to keep the old Hawai'ian customs and religion alive. After a long illness, Kamehameha I died in 1819, and his son Liholiho became King Kamehameha II. There were three more kings called Kamehameha before the end of the great Kamehameha Dynasty!

Use these clues to fill in the crossword below!

ACROSS

2. The Hawai'ian Kingdom was first ruled by King _____.
4. The king adopted uniform _____ throughout his kingdom.
6. In 1790, Kamehameha began to _____ the eight main islands.

DOWN

1. By 1795, Kamehameha controlled all eight islands, except for Ni'ihau and _____.
3. In 1810, the last two islands were _____ to Kamehameha.
5. When Kamehameha died, his son _____ took the throne.

ANSWERS: 1-Kaua'i; 2-Kamehameha; 3-ceded; 4-laws; 5-Liholiho; 6-conquer

Hawai'i Through the Years!

Many great things have happened in Hawai'i throughout its history.

Chronicle the following important Hawai'i events by solving math problems to find out the years in which they happened.

1. Captain Cook lands at Kaua'i

$3 \div 3 =$ $5 + 2 =$ $9 - 2 =$ $4 \times 2 =$

2. The first Protestant missionaries arrive from New England

$4 \div 4 =$ $6 + 2 =$ $6 - 4 =$ $9 - 9 =$

3. Kamehameha III grants Hawai'i's first constitution

$7 - 6 =$ $5 + 3 =$ $3 + 1 =$ $8 - 8 =$

4. Queen Lili'uokalani is deposed by a coup

$5 \div 5 =$ $7 + 1 =$ $3 \times 3 =$ $6 \div 2 =$

5. The Independent Republic of Hawai'i is formed

$2 - 1 =$ $4 + 4 =$ $5 + 4 =$ $7 - 3 =$

6. The United States annexes Hawai'i

$8 \div 8 =$ $1 + 7 =$ $8 + 1 =$ $2 \times 4 =$

7. Japanese fighter planes bomb Pearl Harbor

$0 + 1 =$ $3 \times 3 =$ $2 \times 2 =$ $5 - 4 =$

8. Japanese Americans form the 442nd Regimental Combat Team and fight for the United States

$4 - 3 =$ $3 + 6 =$ $3 + 1 =$ $0 + 2 =$

9. Hawai'i enters the Union

$7 - 6 =$ $0 + 9 =$ $2 + 3 =$ $7 + 2 =$

10. Hawai'i's first native Hawai'ian governor, John Waihe'e, is elected

$2 \div 2 =$ $1 + 8 =$ $5 + 3 =$ $3 \times 2 =$

ANSWERS: 1-1778; 2-1820; 3-1840; 4-1893; 5-1894; 6-1898; 7-1941; 8-1942; 9-1959; 10-1986