

Kansas Country Living

CREATING
COOPERATIVE
CONNECTIONS
MAY 2010
WWW.KEC.ORG

**TURNING
VOWS INTO
WOWS**

It's in the Details

Good Planning Leads
to a Special Ceremony

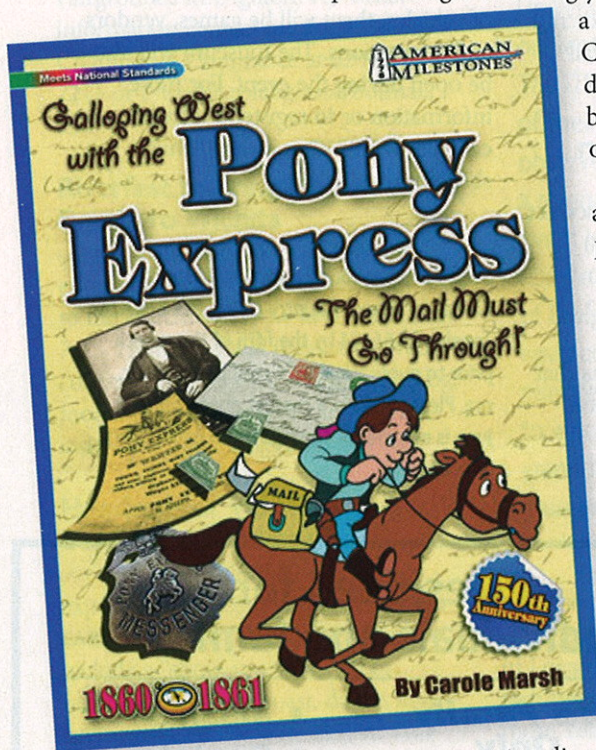
Location, Location

Kansas Has Many
Unique Places to Wed



The Mail Did Go Through—Briefly

BY LARRY FREEZE



One of the most enduring impressions of the American West is undoubtedly the Pony Express. Images of daring young riders blazing a trail to the West Coast to get the mail delivered has long been a romantic icon of the period.

This legendary story is now presented to young readers in *Galloping West with the Pony Express*, a 28-page soft cover book written by Carole Marsh and recently released by Gallopade International to coincide with the 150th anniversary of the service.

Young readers—and older ones as well—

may not realize that this mammoth undertaking in communication lasted only 18

months, from 1860 into 1861. Riders and their speedy horses began the journey in St. Joseph, MO, passed through northeast Kansas, and delivered the mail over 1,800 miles to California in only 10 days.

The book is full of information, both in text and visuals, for readers from the ages of 7 to 14. It includes features such as founders of the Pony Express, why there was a need for mail service, what was in the carrier's mailbag, and how the telegraph ultimately replaced the service.

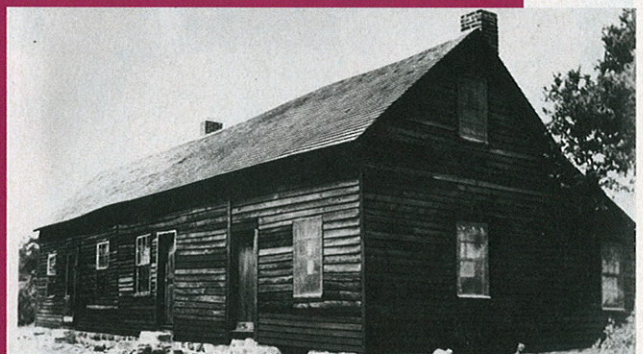
Galloping West with the Pony Express is the latest offering in Gallopade International's American Milestones series of history books. The 23 volumes touch on important aspects of American history, including several with Kansas connections, like *The Oregon Trail*, *Brown vs. Board of Education*, *Lewis & Clark*, *the Underground Railroad*, and *The Civil War*.

The books have proven to be valuable resources for teachers. Each book includes ideas for lesson plans, hands-on activities, biographies, facts and stories.

Galloping West with the Pony Express sells for \$6.99. For more information, call Gallopade International at 800-536-2438 or visit www.gallopade.com. **KCL**

RELIVING HISTORY IN HANOVER

The Hollenberg Pony Express station, which was used 150 years ago, still stands near Hanover in Washington County. It's now designated a state historic site. The nearby community of Marysville will conduct a Pony Express 150th Anniversary Celebration on June 21. Reenactors are scheduled to ride through town that evening. A barbecue and other events are planned.



The Hollenberg Pony Express station near Hanover.