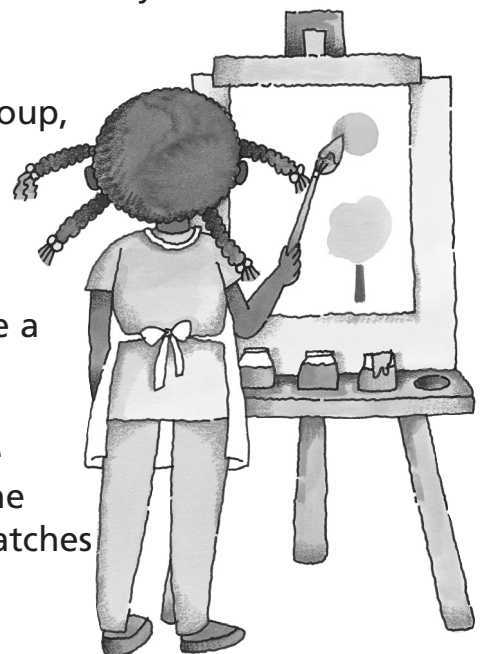


# Online Book Club

## The Mystery on the Great Lakes

# Bring It To Life!

1. Using a map of the Great Lakes, locate several lighthouses. Have each member of the book club choose a lighthouse to draw. Then, as a group, brainstorm things a Great Lakes lighthouse would see if it had eyes. Use the items to write a poem called, "Ode to a Great Lakes Lighthouse." Paste the poem to the drawing to display.
2. Write down the names of all of the characters in the mystery on slips of paper. Fold the slips, and put them in a box. Ask each member to select a slip of paper from the box. Each member should then answer the following questions as if they were the character they selected. What part of the story is your favorite and why? What makes you so important to the story? Then ask other book club members "Who am I?"
3. Rock-N-Roll! Have each book club member choose a favorite rock star they think should be added to the Rock and Roll Hall of Fame. Using a shoebox make a mini exhibit to honor that special star. Use magazines, pipe cleaners, paints, markers, fabrics, and any other materials you can find to make a detailed exhibit.
4. Spin a shipwreck Tale of the Great Lakes. As a group, book club members can brainstorm words that they think of when they think of ships, storms, and shipwrecks. Members can break into groups of two and three to write a short story about a shipwreck. Remember that all stories should have a beginning, middle, and an end.
5. Go online and download the song, "Wreck of the Edmund Fitzgerald," by Gordon Lightfoot. List the details you hear in the song to see how well it matches historical facts. How accurate is it?



# Online Quiz

## The Mystery on the Great Lakes

### Pop Quiz

1. What is the name of the legendary lake monster of Lake Erie?
  - a. Bessie
  - b. Nessie
  - c. Ichabod
2. What is dangling from the ceiling of the Rock and Roll Hall of Fame?
  - a. musical notes
  - b. the shoes of rock stars
  - c. wildly painted cars
3. How did the Great Sleeping Bear Dunes form?
  - a. glaciers ground rocks into sand and wind piled the sand into dunes
  - b. bears pushed the sand into piles
  - c. men with bulldozers piled the sand there
4. What is the name of the boat that Christina and Grant are on?
  - a. The Edmund Fitzgerald
  - b. Papa's Dream
  - c. Mimi
5. How did Mackinac Island get its name?
  - a. Its named for John Mackinac who buried treasure there
  - b. Its name means "large turtle" in the language of the tribal people who once lived there
  - c. Its named for a pirate ship that ran aground on its shore
6. What interesting dish do Christina and Grant try at the Island House Hotel?
  - a. walleye cheek chowder
  - b. fish eyeball stew
  - c. fried squid
7. Why are lighthouses so important to the ships and crew on the Great Lakes?
  - a. they make the Great Lakes pretty
  - b. they make it easier to study animals and water quality
  - c. they help the ships navigate around the islands
8. What surprise do Mimi and Papa have for Christina?
  - a. a new pet turtle
  - b. a piece of the bell off The Edmund Fitzgerald
  - c. a surprise birthday party in a lighthouse



# Know your SAT Words!

**Mystery Name: The Mystery on the Great Lakes**

## SAT Words



1. Intrigue: \_\_\_\_\_
2. Collapse: \_\_\_\_\_
3. Foliage: \_\_\_\_\_
4. Nuisance: \_\_\_\_\_
5. Maneuver: \_\_\_\_\_

Write a sensational sentence using all five SAT Words from this mystery.

---

---

---

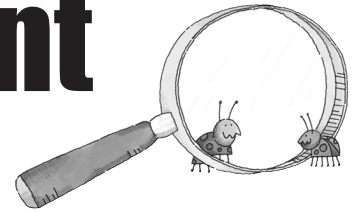
---

---



# THE MYSTERY ON THE Great Lakes

# Scavenger Hunt



Want to have some fun? Let's go on a scavenger hunt! See if you can find each item either in the book or when you visit the real place. Good luck! *(Teachers: You have permission to reproduce this page for your students.)*

1. \_\_\_ A lighthouse

2. \_\_\_ A dock

3. \_\_\_ Walleye

4. \_\_\_ An island

5. \_\_\_ A guitar

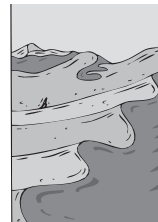
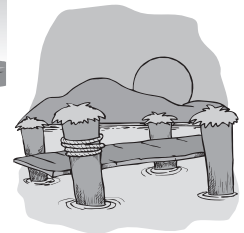
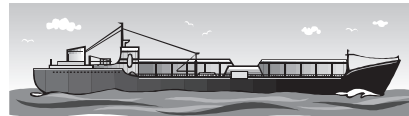
6. \_\_\_ A cargo ship

7. \_\_\_ Buffalo wings

8. \_\_\_ Sand dunes

9. \_\_\_ Life vest

10. \_\_\_ Shipwreck



# Online Book Club

## The Mystery on the Great Lakes

### Talk About It!

1. What would it be like to be on the Great Lakes during a nor'easter?
2. Think about eating spicy Buffalo wings. Describe what you taste and smell. How does your mouth feel?
3. If you went to the Rock and Roll Hall of Fame, which exhibit would you want to see first? Why?
4. Do you think that a sea monster could really exist in the Great Lakes? How would it look?
5. Why are there so many lighthouses in the Great Lakes?
6. Why were the Sleeping Bear Dunes so hard for Grant and Christina to run in?
7. List ways the Great Lakes are important to the United States and the people who live there.
8. Why are icebreakers important to the Great Lakes ships?
9. Would you like to go in the *Devil's Mouth* on *Devil's Island*? Why or why not?
10. In what unusual place would you like to celebrate your birthday? Why

