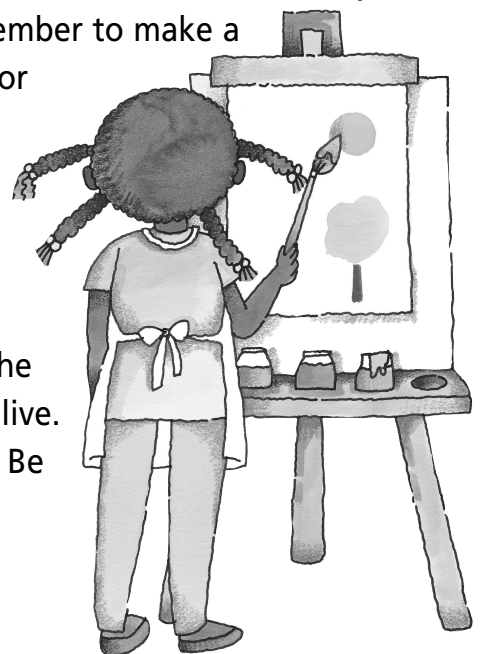


Online Book Club

The Mystery at Dracula's Castle

Bring It To Life!

1. Map It! Find a map of Europe on the Internet. Ask several book club members to draw a map of Europe and label the countries. Color Romania in a special color and decorate it in a special way—maybe with little bats! List Romania's neighbors.
2. Draw it! Name it! Draw a medieval castle like Bran Castle. You might want to draw it at night, with the moon shining bright and a few bats circling around! Then, name your castle. Be creative, be inventive, be spooooooky!!
3. What time is it, really, and what's the weather? Use Internet tools to help you find out the time difference between your home state and Romania. Decide what time it is in Romania compared to the time in your town! Then, decide what the weather would be in Romania today compared to where you live.
4. Make a Teutonic Knight shield! Look for images of the Teutonic Knights on the Internet. Then, find a large cardboard box. Cut the side off the box, and make your own Teutonic Knight shield out of the cardboard. Remember to make a handle on the inside so you can hold it in front of you for protection!
5. Travel to Transylvania! Transylvania is a beautiful and interesting place! Divide into three groups to research Transylvania. One group can research the area's history, another group can research the area's geography, and the last group can research the area's people and how they live. Prepare reports on posters to present to the book club. Be sure to add lots of pictures!



Online Quiz

The Mystery at Dracula's Castle

Fact or Fiction?

Write Fact or Fiction next to each question below.

- _____ 1. Dracula's castle is up for sale.
- _____ 2. Mr. Van Helsing told Grant and Christina the real history of the Dracula legend.
- _____ 3. Ms. Alucard suggested that Grant and Christina accompany their grandparents to the castle for the weekend.
- _____ 4. Christina and Grant suspected that Ms. Alucard might be a vampire.
- _____ 5. Queen Betsy was a member of the Romanian royal family who lived in Bran Castle before World War II.
- _____ 6. At Bran Castle, Christina found a hidden passage behind the bookcase.
- _____ 7. Grant and Christina never discover the truth about Dracula in the hidden passage.
- _____ 8. A hand reached out from the chest, scaring Christina, Grant, Maria, and John.
- _____ 9. Grant brought several vampire books with him to Transylvania.
- _____ 10. Maria and John solved the mysterious riddle at the end of the story.



Know your SAT Words!

The Mystery at Dracula's Castle

SAT Words



1. eloquent
2. illuminate
3. labyrinth
4. malevolent
5. wallow

Write a sensational sentence using all five SAT Words from this mystery.



Online Book Club

The Mystery at Dracula's Castle

Talk About It!

1. Would you like it if your parents wanted to buy a castle similar to the one in the book? Why or why not?
2. How would you feel if someone played a trick on you like John and Maria played on Grant and Christina?
3. Why do you think bats kept appearing every time Ms. Alucard arrived?
4. Sir Bradenburg wants to preserve the castle because of its history. Why is it important to preserve historical buildings and artifacts?
5. Would you like to travel to Romania someday? Why or why not?
6. Christina and Grant spent time reading scary vampire stories. What type of stories do you like to read before bed?
7. What was your favorite part of the book? Why?
8. The children travel on the *Mystery Girl* and on a commercial airline jet in this book. Have you ever flown in a small plane? Have you ever traveled on an airline jet? What do you think some of the differences would be?



Online Information

The Mystery at Dracula's Castle

Trivia

1. The name 'Transylvania' means, "land beyond the forest."
2. Transylvania is a province in the country of Romania. It is located in the Carpathian Mountains.
3. Transylvania is a beautiful place, featuring tall mountain peaks, deep valleys, caverns, and crystal-clear streams and waterfalls.
4. Peasants still drive horse-drawn carts and cut the grass with sickles and scythes in much of Transylvania.
5. The Transylvania countryside is dotted with beautiful buildings, including ancient wooden churches, monasteries painted inside and out with Biblical scenes, and majestic castles.
6. Transylvania offers some of the best snow skiing in Romania!
7. Transylvania has many ancient "walled" cities with fortresses and towers, built as defense against invading armies.

